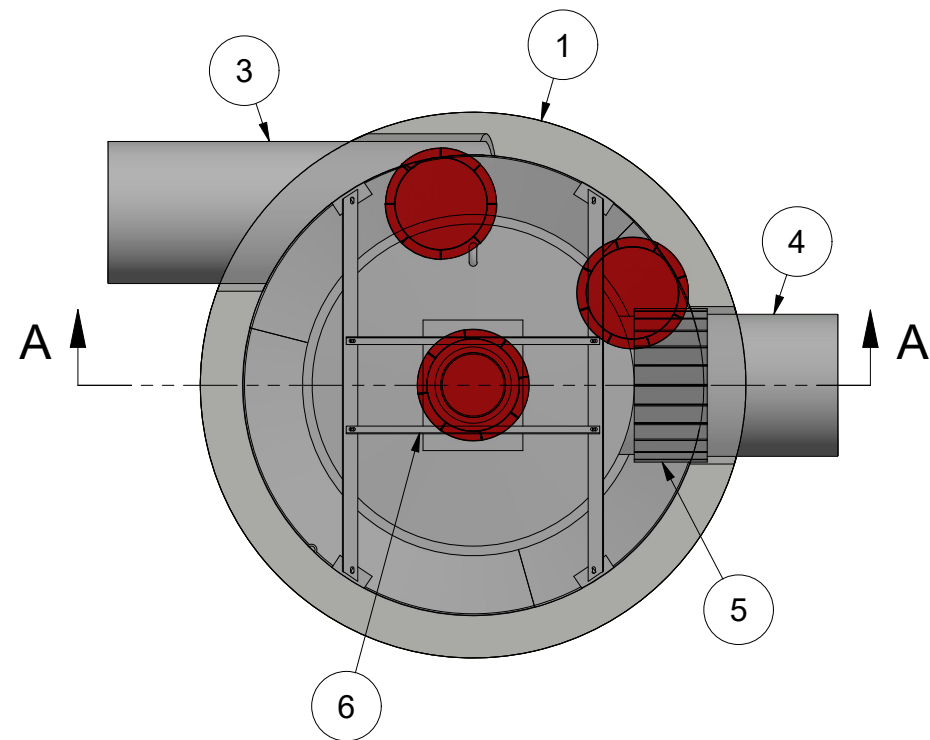
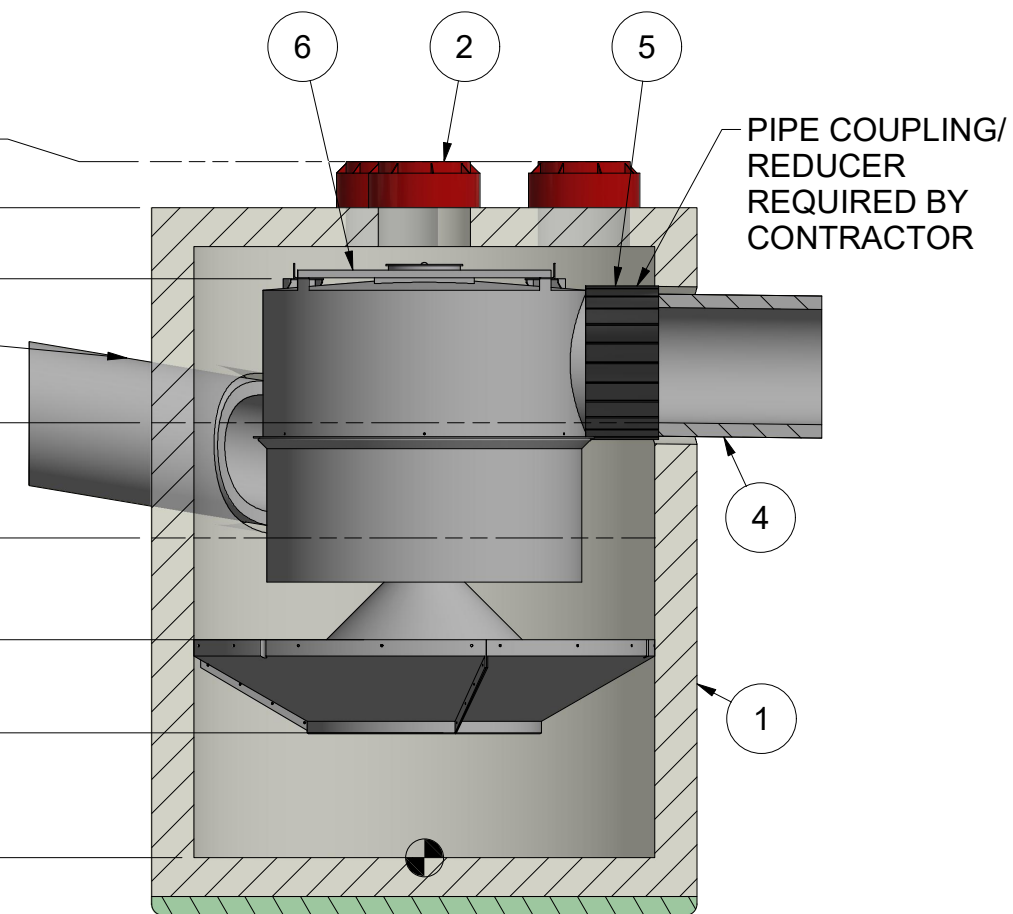


OUTLET STUB ID: 30" (750 mm)
 OUTLET STUB OD: 36" (900 mm)



RIM: VARIES
 T.O.S.: 14.1 ft [4.299 m]
 (MINIMUM)
 LEDGER: 12.56 ft [3.829 m]
 3
 OUTLET: 9.44 ft [2.877 m]
 (MINIMUM)
 INLET: 6.94 ft [2.115 m]
 SKIRT: 4.73 ft [1.441 m]
 BOTTOM OF INTERNALS: 2.71 ft [.826 m]
 SUMP: 0 ft [.000 m]

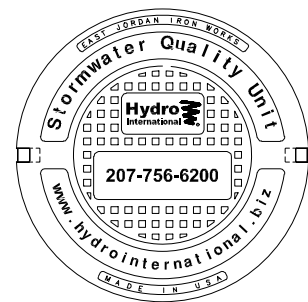


PIPE COUPLING/
 REDUCER
 REQUIRED BY
 CONTRACTOR

STONE BASE
 PER PROJECT
 SPECIFICATIONS

SECTION A-A

NOTE: NOT FOR CONSTRUCTION.
 CONTACT HYDRO FOR SITE
 SPECIFIC DETAIL



**HYDRO FRAME AND
 COVER (INLCUDED)**
 GRADE RINGS BY OTHERS
 AS REQUIRED

1. MANHOLE WALL AND SLAB
 THICKNESSES ARE NOT TO
 SCALE.
 2. CONTACT HYDRO
 INTERNATIONAL FOR A
 BOTTOM OF STRUCTURE
 ELEVATION PRIOR TO
 SETTING DOWNSTREAM
 DEFENDER MANHOLE.



IF IN DOUBT ASK

DATE: 12/7/2020 SCALE: 1 / 50
 DRAWN BY: ER CHECKED BY: MRJ APPROVED BY:

Title
 10ft-DIAMETER
 DOWNSTREAM DEFENDER

GENERAL ARRANGEMENT



WEIGHT: N/A MATERIAL:
 STOCK NUMBER:
 NEXT ASSY
 DRAWING NO.:
 DD GA-10
 SHEET SIZE: B SHEET: 1 OF 1 Rev: A

EQUIPMENT PERFORMANCE

The stormwater treatment unit shall adhere to the hydraulic parameters given in the chart below and provide the removal efficiencies and storage capacities as follows:

1. The treatment system shall use an induced vortex to separate pollutants from stormwater runoff.
2. Peak Hydraulic Capacity: 25.0 cfs (708 l/s)
3. Sediment Storage Capacity: 8.70 cu. yd. (6.65 cu. m)
4. Continuous Oil Storage Capacity: 1050 gal. (3975 liters)
5. Sediment shall be stored in a zone that is isolated from the main flow path and protected from reentrainment by a benching skirt.
6. For more product information including regulatory acceptances, please visit <https://hydro-int.com/en/products/downstream-defender>

PARTS LIST

ITEM	QTY	SIZE (in)	SIZE (mm)	DESCRIPTION
1	1	120	3000	PRECAST MANHOLE (BY HYDRO VIA PRECASTER)
2	3	24	600	FRAME AND COVER (QTY 3)
3	1	30 (MAX)	750 (MAX)	INLET PIPE (BY OTHERS)
4	1	30 (MAX)	750 (MAX)	OUTLET PIPE (BY OTHERS)
5	1			PIPE COUPLING (BY OTHERS)
6	1			INTERNAL COMPONENTS (PRE-INTALLED)