

Noggerath® Centre-Flo Band Screen

Protect downstream processes at wastewater treatment works with fine and ultra-fine screening

Product Summary

The Noggerath® Centre-Flo Band Screen CF is a space-saving fine screen for installation at the inlet works of wastewater treatment works to protect the downstream treatment processes from damage or clogging. The Noggerath® Centre-Flo Band Screen CF delivers a Screenings Capture Rate of up to 83%*.

Applications

- » Municipal wastewater treatment works
- » Industrial wastewater treatment systems

Benefits

Protect downstream processes from damage or clogging

By removing solids and debris from the sewage inflow, the Noggerath® Centre-Flo Band Screen **protects downstream processes** from damage and clogging, supporting efficient operation of downstream processes helping sites maintain regulatory discharge compliance.

Capture more solids in an optimised footprint

The specialist, patented honeycomb panel media and the efficient flow path enable the Noggerath® Centre-Flo Band Screen to deliver a very high **screenings capture rate of up to 83%***.

Increase throughput and reduce headloss

The patented curved honeycomb panels have a large open area of up to 92%. This helps **reduce the operating headloss** and **enables a high throughput**.

Improve plant hydraulics and screenings capture efficiency

The Noggerath® Centre-Flo Band Screen offers a straightforward retrofit solution for existing channels, enhancing plant hydraulics and improving screenings capture efficiency. **Each unit can be customised** to meet specific channel dimensions and hydraulic conditions, making it an ideal for deep channel applications.

* screenings capture rate with 6 mm perforations on honeycomb panels.



Technical Information

Flow rate	200 l/s - 5,000 l/s
Channel Width	700 mm - 2,400 mm
Channel Depth	up to 10,000 mm
Curved honeycomb filter panels	3 mm - 6 mm
Perforated filter panels	1 mm - 8 mm
Opening flat honeycomb panels	1 mm - 10 mm
Screenings capture rate	up to 83%*
Frame, encapsulation	Stainless steel AISI 304L or AISI 316L
Drive guide links	Ultra High Molecular Weight Polyethylene UHMWPE
Panel material options	Polypropylene UHMWPE



Find out more about how the Noggerath® Centre-Flo Band Screen can help protect your treatment works:

→ hydro-int.com/centre-flo-screen

How it works

1. The diverter plates direct the influent flow into the submerged section of the screen.
2. The flow then undergoes a 90° change in direction to flow through the Centre-Flo™ screening panels.
3. Solids captured by the screen will gradually accumulate in the panels and eventually the upstream water level will increase.
4. On reaching the set operating high water level, the screen operates until the low operating water level is reached.
5. The captured screenings are carried up by the filter panels and larger solids by the lifters to the discharge point.
6. At the upper turning point, the screenings are flushed by a wash water system, located on the outside of the belt, into a trough installed at the top of the unit or into a wash press system.

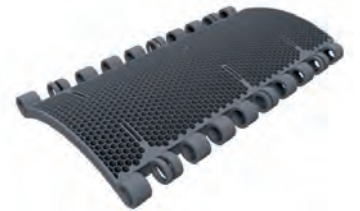


Modular head for improved safety, visibility, and cleaning - includes the drive system, the discharge flume and the spray water system fitted with spray nozzles for maximum cleaning efficiency.

Clear and steel hatch options for optimal monitoring and integrated mesh safety screen.



External drive system for low blockage risk and easy access for maintenance



Patented, curved honeycomb screening panel with open area of up to 90%, enabling a high flow throughput.

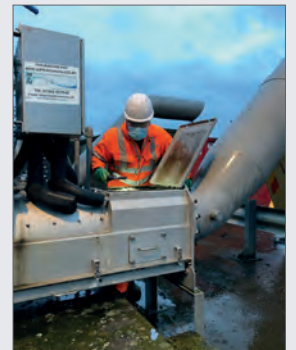
To find out how our range of wastewater inlet works solutions can help you cut the costs of solids handling and improve downstream treatment efficiency at your treatment works call 01275 878371 or visit: → hydro-int.com/inlet-works

UK Wastewater Services

Hydro International's UK Wastewater Services team is the country's largest provider of screen servicing and maintenance. Operating from five regional offices across the UK they deliver critical support to wastewater treatment plant owners and operators 24 hours a day, 365 days a year.

- » Repair & refurbishment
- » Servicing & maintenance
- » Inlet equipment hire
- » Spares provision
- » Emergency support 24/7

To find out how our services team can help you keep your inlet works working at peak efficiency please call 01305 821142



Hydro International
A CRH COMPANY



Passavant Geiger

📍 Hydro International
Unit 2, Rivermead Court, Kenn Business Park
Windmill Road, Clevedon, BS21 6FT
☎ Tel: +44 (0)1275 878371
✉ Email: wastewatersolutions@hydro-int.com
🌐 Web: hydro-int.com

📍 Passavant-Geiger GmbH
Passavant-Geiger-Strasse 1
65326 Aarbergen Germany
☎ Tel: +42 6120 28 0
✉ Email: info@passavant-geiger.com
🌐 Web: passavant-geiger.com

Noggerath® is a registered trade mark of Aqseptence Group