

**IF IN DOUBT ASK**

- NOTES:
1. SYSTEM CAN BE ORIENTED WITH LONG OR SHORT SIDE PARALLEL TO THE CURBLINE
  2. CONCRETE FOOTINGS TO BE SET ON CRUSHED STONE
  3. CONCRETE PANELS AVAILABLE
  4. ADDITIONAL DEPTHS AVAILABLE CONTACT HYDRO

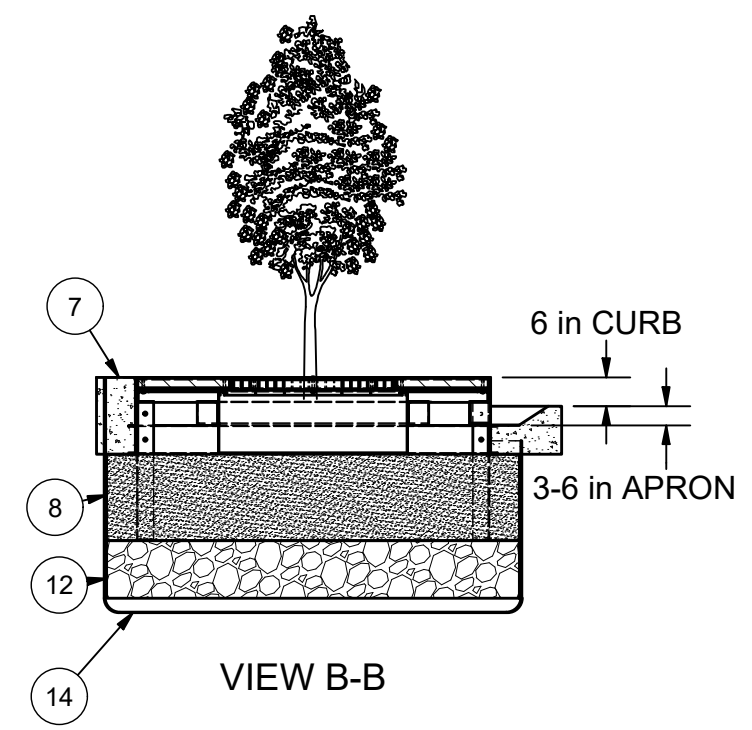
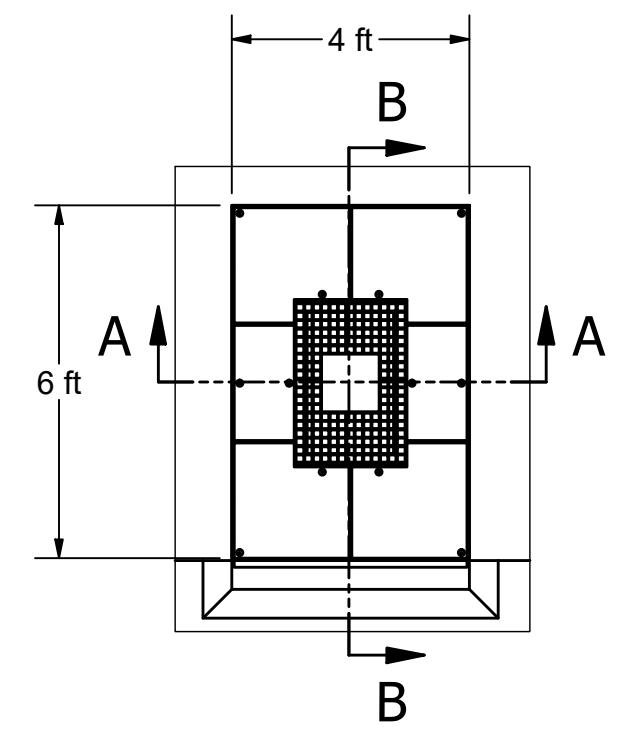
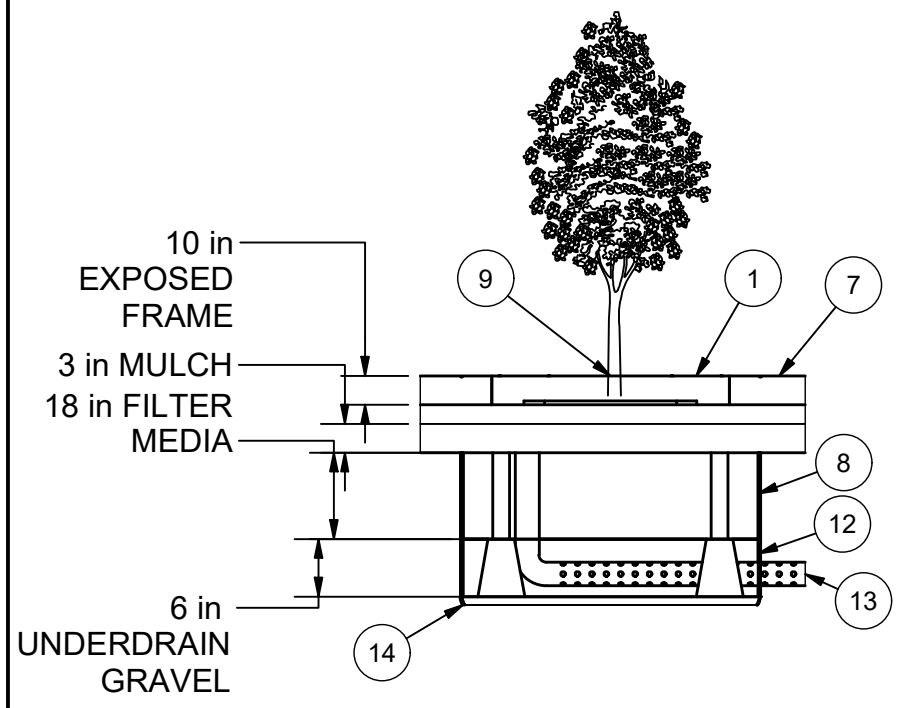
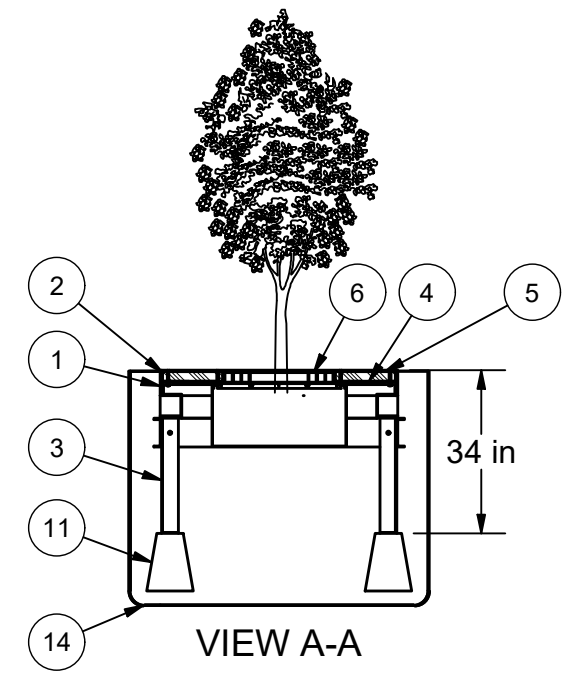
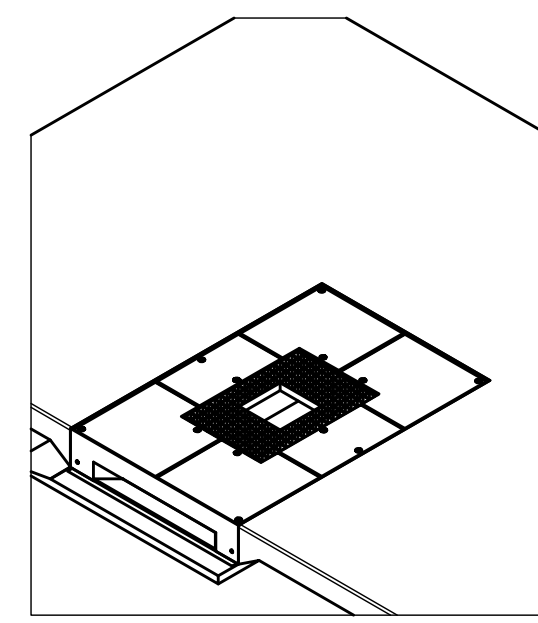
DATE: 6/4/2020 SCALE: 1:40  
 DRAWN BY: EHR CHECKED BY: APPROVED BY:

Title: **STORMSCAPE**  
 4-FT X 6-FT GENERAL ARRANGEMENT

LINER STANDARD CONFIGURATION



WEIGHT: MATERIAL:  
 STOCK NUMBER:  
 DRAWING NO.: **-basemodel**  
 SHEET SIZE: B SHEET: 1 OF 1 Rev: -



Parts List		
ITEM	PART NUMBER	QTY
1	FRAME	1
2	GRID	1
3	LEG	4
4	ACCESS PLATE	6
5	SURFACE TILES	6
6	GRATING	2
7	SIDEWALK (BY OTHERS)	1
8	MEDIA	2 CY
9	PLANT (BY OTHERS)	1
10	BAFFLE	1
11	CONCRETE FOOTING	4
12	GRAVEL FOR FOOTINGS (BY OTHERS)	1
13	OPTIONAL UNDERDRAIN/BYPASS (BY OTHERS)	1
14	IMPERMEABLE LINER (OPTIONAL)	1

ANY WARRANTY GIVEN BY HYDRO INTERNATIONAL WILL APPLY ONLY TO THOSE ITEMS SUPPLIED BY IT. ACCORDINGLY HYDRO INTERNATIONAL CANNOT ACCEPT ANY RESPONSIBILITY FOR ANY STRUCTURE, PLANT, OR EQUIPMENT, (OR THE PERFORMANCE THERE OF) DESIGNED, BUILT, MANUFACTURED, OR SUPPLIED BY ANY THIRD PARTY. HYDRO INTERNATIONAL HAVE A POLICY OF CONTINUOUS DEVELOPMENT AND RESERVE THE RIGHT TO AMEND THE SPECIFICATION. HYDRO INTERNATIONAL CANNOT ACCEPT LIABILITY FOR PERFORMANCE OF ITS EQUIPMENT, (OR ANY PART THEREOF), IF THE EQUIPMENT IS SUBJECT TO CONDITIONS OUTSIDE ANY DESIGN SPECIFICATION. HYDRO INTERNATIONAL OWNS THE COPYRIGHT OF THIS DRAWING, WHICH IS SUPPLIED IN CONFIDENCE. IT MUST NOT BE USED FOR ANY PURPOSE OTHER THAN THAT FOR WHICH IT IS SUPPLIED AND MUST NOT BE REPRODUCED, IN WHOLE OR IN PART, WITHOUT PRIOR PERMISSION IN WRITING FROM HYDRO INTERNATIONAL.